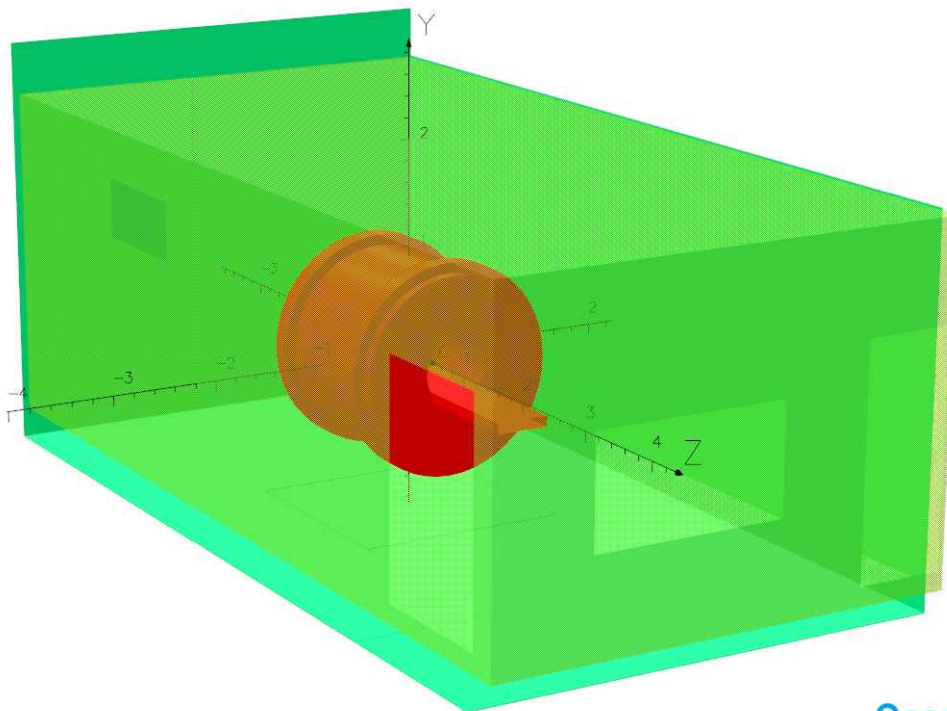


List of Documents

No.	Document No.	Document
01	73893-1183861-01	Magnetic Shielding
02	73893-1183861-02	Overview
03	73893-1183861-03	Fringefields
04	73893-1183861-04	Fringefields
05	73893-1183861-05	Shield dimensions
06	73893-1183861-06	Shield dimensions
07	73893-1183861-07	Shield dimensions
08	73893-1183861-08	Examples for connections



UNITS		
Length	m	
Magn Flux Density	T	
Magnetic Field	A/m	
Magn Scalar Pot	A	
Current Density	A/m ²	
Power	W	
Force	N	

MODEL DATA		
or65_CHONGQING_MU_Aff_No2_Hospital_01.op3		
Magnetostatic (TOSCA)		
Nonlinear materials		
Simulation No 1 of 1		
1663203 elements		
2603858 nodes		
17 conductors		
Nodally interpolated fields		
Activated in global coordinates		

Field Point Local Coordinates		
Local = Global		

FIELD EVALUATIONS			
Cartesian	CARTESIAN	100x150	Cartesian
(noda)			
x=0.0	y=6.0 to -6.0	z=9.0 to -9.0	
Fit	FIT (Integral)	32x32	Spherical
r=0.25	θ=0.00429792	φ=0.0 to 3.137295	6.283185



Magnetic Shielding

(SP No. 1-HJC2ET)

Korb T. 10.12.2019		
Edited	Checked	Released



Siemens Healthcare GmbH
 Planning department
 Hartmannstrasse 16
 D-91052 Erlangen

CQ/MU Aff. No.2 Hospital

Chongqing 400 010

Location: Tianwen Road No.288, Nanan District, Chongqing

1st floor
 MAGNETIC RESONANCE
 MAGNETOM Prisma

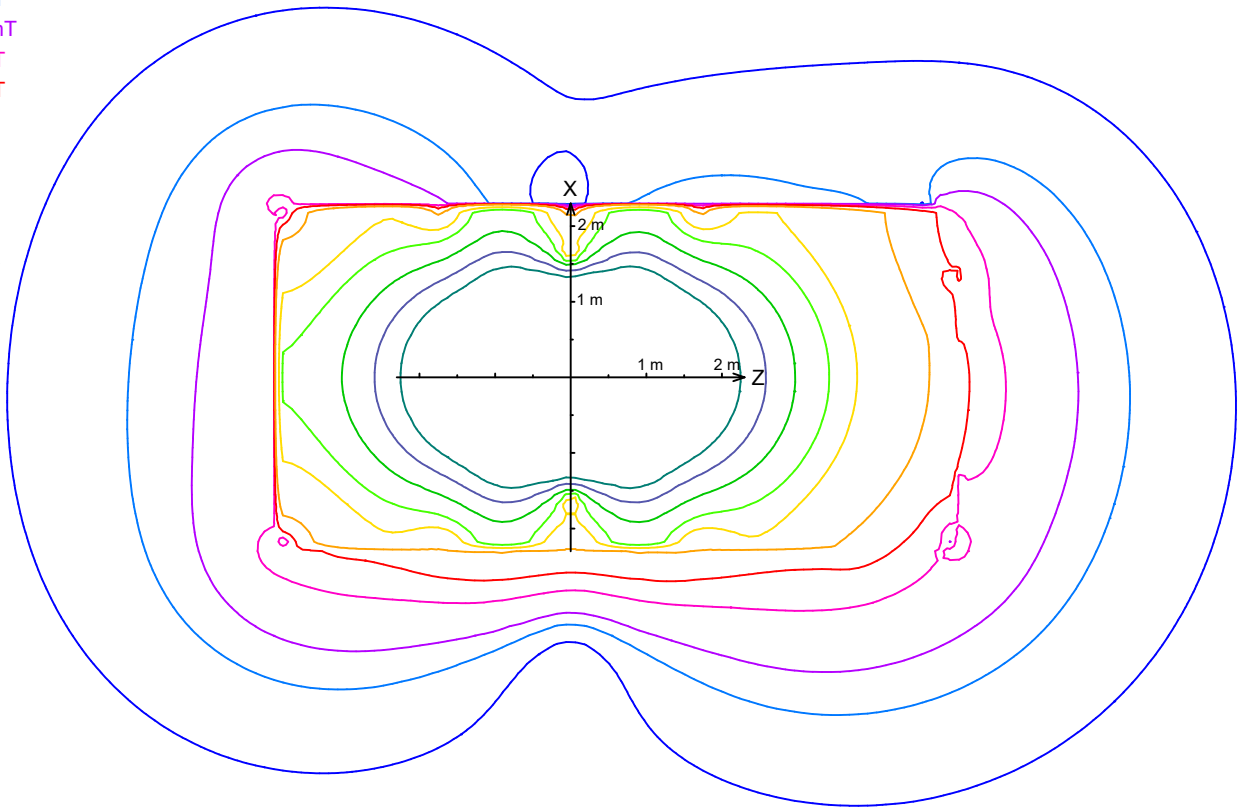


Project 73893	File 1183861	Revision	Page 01 of 08	Size A4	Scale
------------------	-----------------	----------	------------------	------------	-------

or65_CHONGQING_MU_Aff_No2_Hospital_01.op3

Fieldlines for:

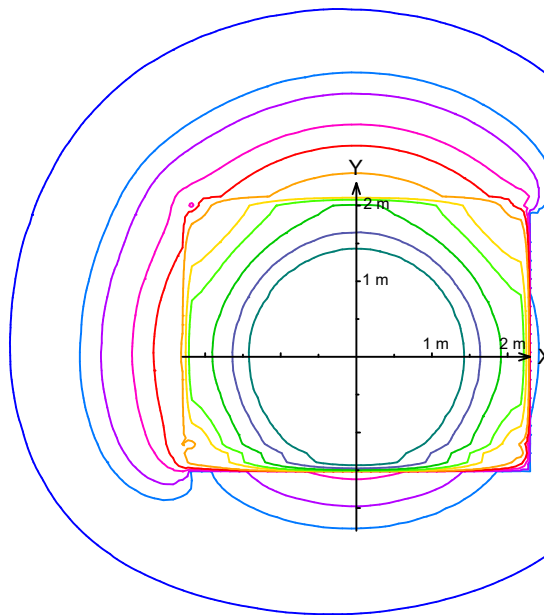
- 0.05 mT
- 0.1 mT
- 0.15 mT
- 0.3 mT
- 0.5 mT
- 1 mT
- 3 mT
- 5 mT
- 10 mT
- 20 mT
- 40 mT




or65_CHONGQING_MU_Aff_No2_Hospital_01.op3

Fieldlines for:

- 0.05 mT
- 0.1 mT
- 0.15 mT
- 0.3 mT
- 0.5 mT
- 1 mT
- 3 mT
- 5 mT
- 10 mT
- 20 mT
- 40 mT



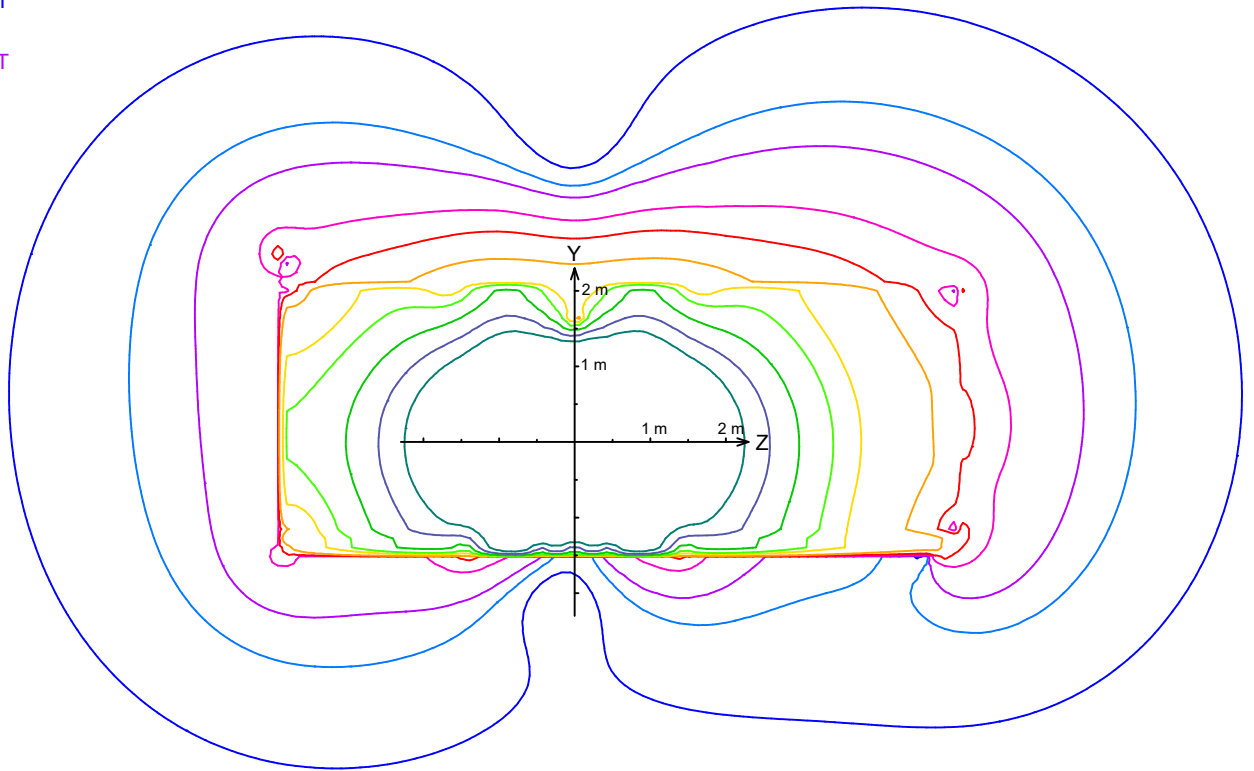
Fringefields

		MAGNETIC RESONANCE MAGNETOM Prisma	
Location: Tianwen Road No.288, Nanan District, Chongqing 1st floor CQ/MU Aff. No.2 Hospital			Size A4
Chongqing 400 010		Project 73893	File 1183861
		Revision Page 03 of 08	Scale 1:100

or65_CHONGQING_MU_Aff_No2_Hospital_01.op3

Fieldlines for:

- 0.05 mT
- 0.1 mT
- 0.15 mT
- 0.3 mT
- 0.5 mT
- 1 mT
- 3 mT
- 5 mT
- 10 mT
- 20 mT
- 40 mT



© Siemens Healthcare GmbH created by Sales CAD

Fringefields



MAGNETIC RESONANCE
MAGNETOM Prisma

Location: Tianwen Road No.288, Nanan District, Chongqing | 1st floor

CQ/MU Aff. No.2 Hospital

Size
A4

Scale
1:100

Chongqing 400 010

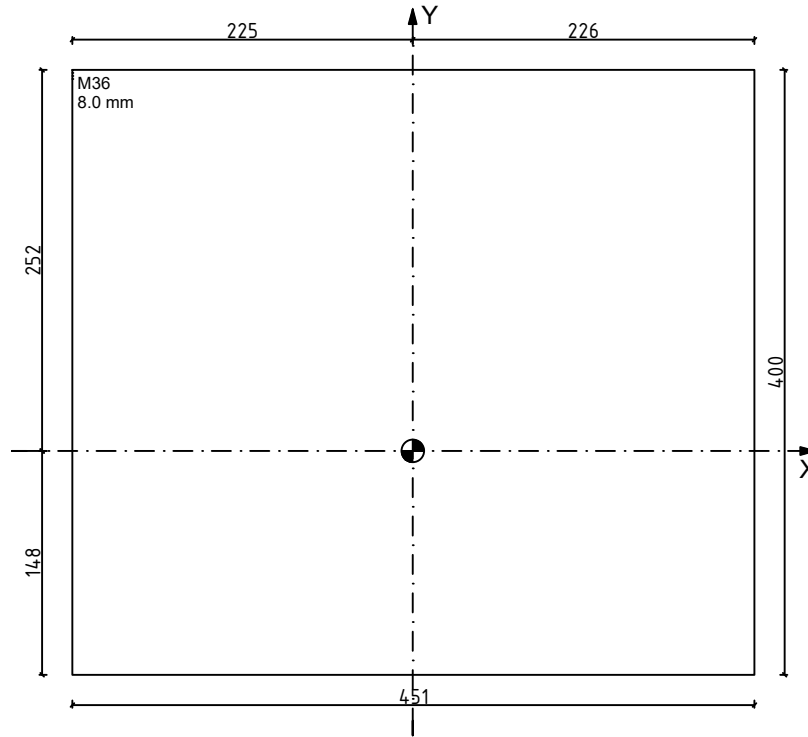
Project
73893

File
1183861


Revision

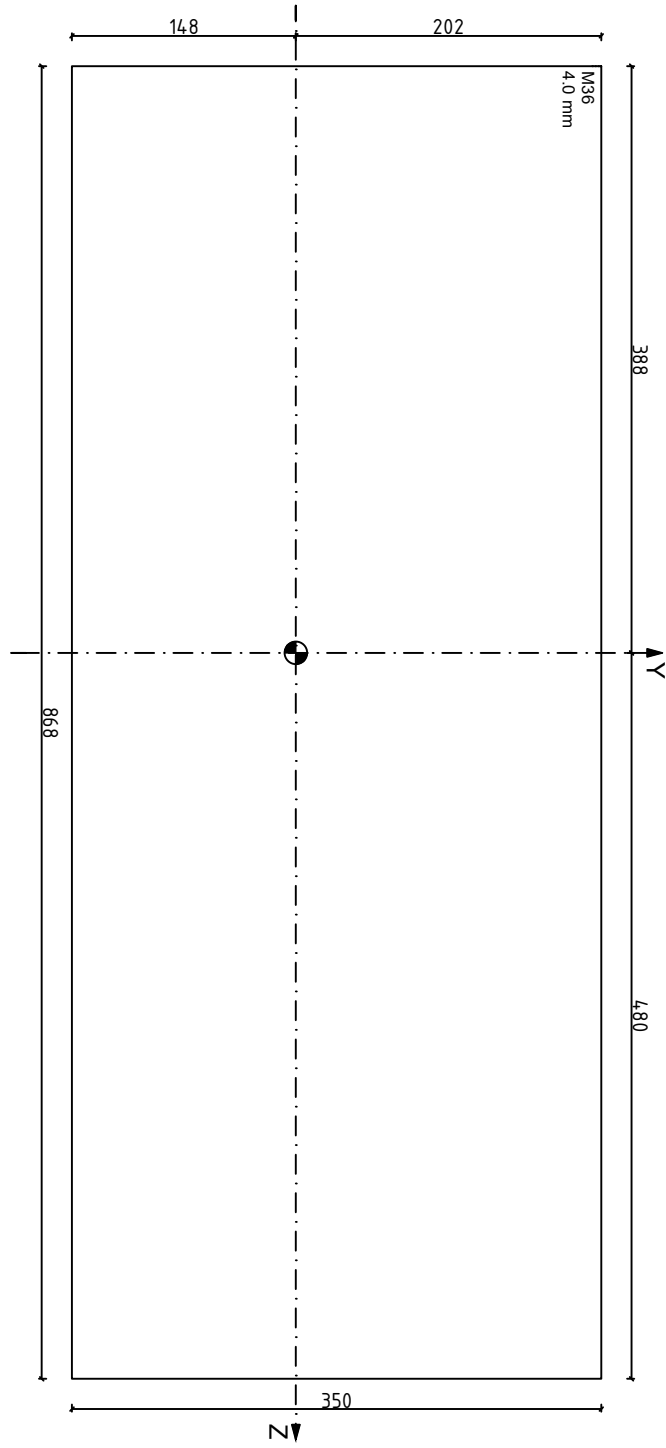
Page
04 of 08

Shielding Rearwall	
Position in Z-Direction	-388 cm
magnetic flux in direction	XY
Shielding Material	M36
Weight	1137 kg




Shield dimensions

		MAGNETIC RESONANCE MAGNETOM Prisma		
Location: Tianwen Road No.288, Nanan District, Chongqing 1st floor CQ/MU Aff. No.2 Hospital			Size A4	Scale 1:50
Chongqing 400 010	Project 73893	File 1183861	Revision Page	05 of 08

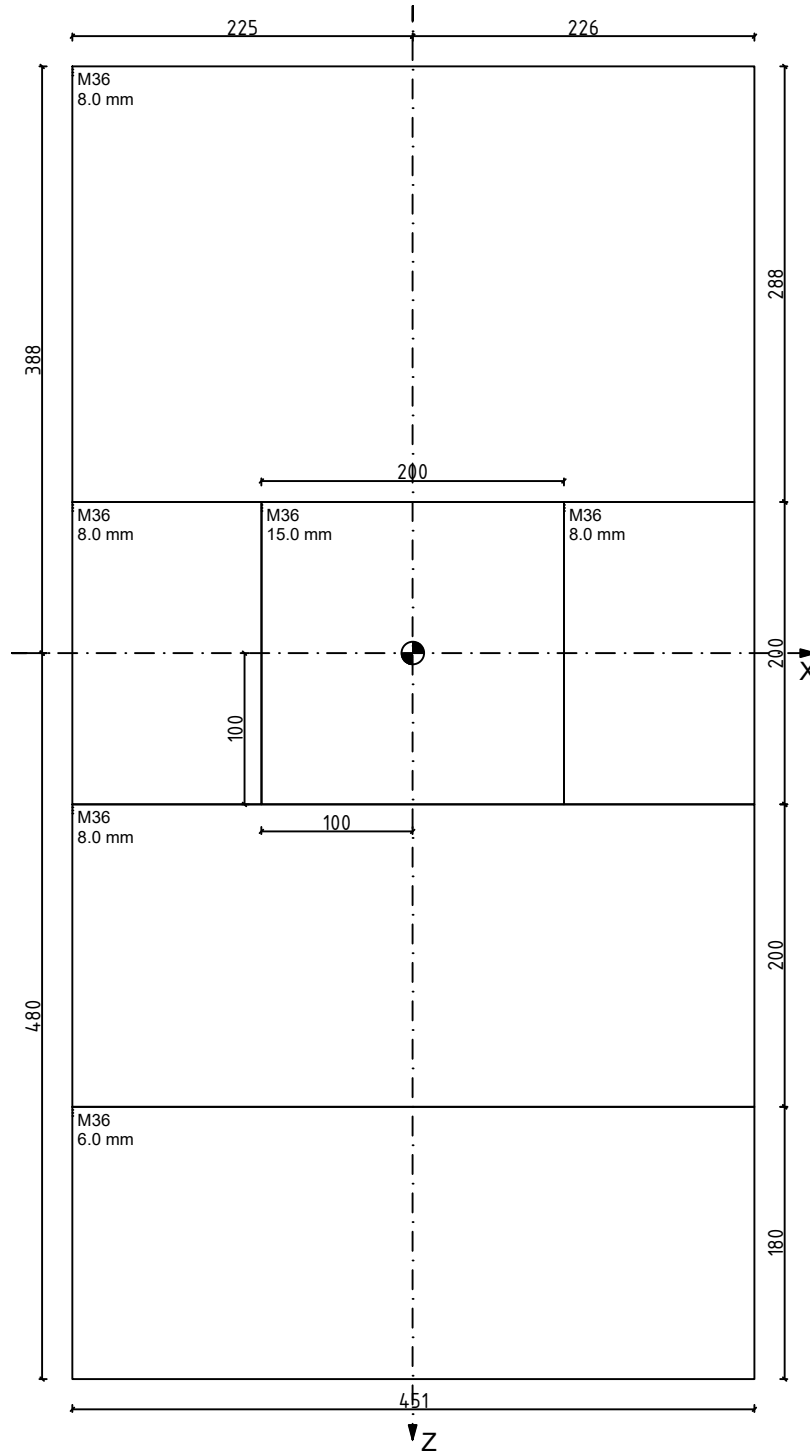


Shielding Sidewall (RIGHT)	
Position in X-Direction	226 cm
magnetic flux in direction	Z
Shielding Material	M36
Weight	958 kg

Shield dimensions

		MAGNETIC RESONANCE MAGNETOM Prisma		
Location: Tianwen Road No.288, Nanan District, Chongqing 1st floor CQ/MU Aff. No.2 Hospital			Size A4	Scale 1:50
Chongqing 400 010	Project 73893	File 1183861	Revision Page	06 of 08

Shielding Floorplate	
Position in Y-Direction	-148 cm
magnetic flux in direction	Z
Shielding Material	M36
Weight	2562 kg



Shield dimensions

	MAGNETIC RESONANCE		Size	Scale
	MAGNETOM Prisma		A4	1:50
Location: Tianwen Road No.288, Nanan District, Chongqing 1st floor			Revision	Page
CQ/MU Aff. No.2 Hospital				
Chongqing 400 010	Project	File		
	73893	1183861		

